

# ***The Ambassadors College, Ota***

**PRE – SS1**

**Second Term Holiday Assignment**

**HOLIDAY ASSIGNMENT**

**2025/2026 Academic Session**

**Name:** \_\_\_\_\_

## Second Term Holiday Assignment

---

### MATHEMATICS

---

1. Solve the inequality:  $3x - 7 > 2x + 5$
2. Solve and represent on a number line:  $-2 \leq 4x - 6 < 10$
3. Solve the simultaneous equations:  
 $2x + y = 7$   
 $x - y = 1$
4. The sum of two numbers is 20 and their difference is 4. Find the two numbers.
5. Find the simple interest on ₦15,000 at 8% per annum for 3 years.
6. A shirt is marked at ₦5,000 but sold at a 10% discount. Find:  
a. the discount amount                      b. the selling price
7. A television costs ₦120,000 cash. On hire purchase, a deposit of ₦30,000 is paid and the balance is spread over 9 months at ₦12,000 per month. Find:  
a. the total hire purchase price  
b. the extra cost of buying on hire purchase
8. Solve the equation:  $5(2x - 3) = 3(x + 7)$
9. Divide ₦72,000 in the ratio 3 : 5 : 4.
10. A student scored 45 out of 60 in a test. Find the percentage score.

### ENGLISH LANGUAGE

---

#### ESSAY

Answer one question only from this section. All questions carry equal marks.

Your answer should not be less than 450 words.

1. Your friend in another school has requested some information about your school to enable him to decide on moving over to your school. Write a letter to him discussing at least three areas in which your school excels.
2. Write an article for publication in your school magazine, discussing the reasons why children in your area drop out of school and suggesting ways of minimizing this negative trend.

## Second Term Holiday Assignment

---

3. There has been a continued discussion on the evils of unemployment. Write a letter to the Commissioner for Labour highlighting at least three of these evils and suggest ways of addressing them.
3. You are one of the speakers in a debate on the topic: 'Women should not be in paid employment while they are still bearing children.' Write your contribution for or against the proposition.
4. Write a story ending with the words: I wish I had listened to my father.

## BASIC SCIENCE

---

### **PHYSICS**

1. A car is lifted by a set of four hydraulics with each having a piston surface area of  $0.02\text{m}^2$ . Effort is applied at another part having a master piston of surface area  $0.001\text{m}^2$ . The pressure all through the hydraulics as well as the master piston is constant. Calculate the weight of the car if a force of  $200\text{N}$  is applied at the master piston end to just lift the car.
2. State four (4) characteristics each of:
  - i. Series circuit
  - ii. Parallel circuit

### **CHEMISTRY**

1. a. Explain radioactivity  
b. State the three types of radioactivity and two properties each
2. a. State three factors that affect rate of reaction  
b. Explain endothermic and exothermic reaction with two examples each.
3. State the steps involve in salt preparation.

### **BIOLOGY**

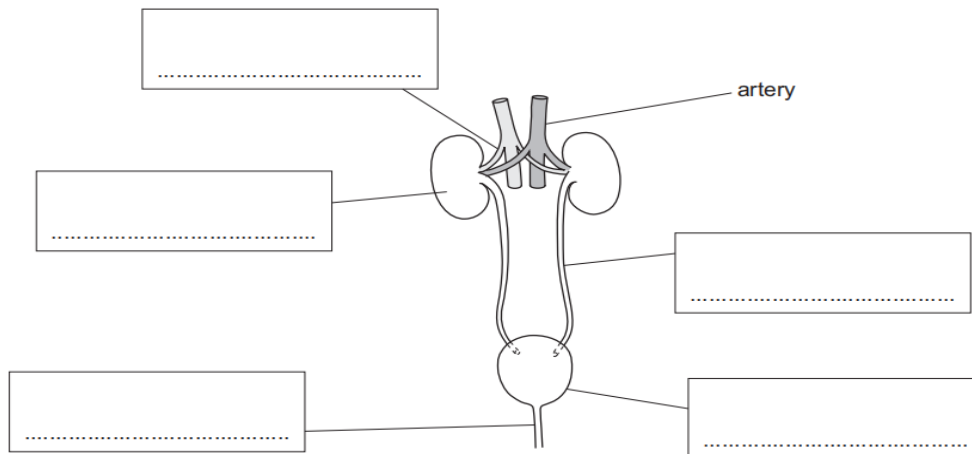
1. Look at the table about what happens in different parts of the excretory (renal) system.
  - a. Complete the table. The first row has been done for you.

## Second Term Holiday Assignment

part	what happens
renal artery	blood enters excretory (renal) system
kidney	.....
.....	urine travels through this tube to be stored
.....	urine is stored here before excretion from body

2marks

Look at the model of the human excretory system.



4marks

2. Look at the diagram. It shows part of the alimentary canal
- i. Name the letters A, B, C and D of the diagram above. 2marks
  - ii. Where is acid added to the alimentary canal?  
Circle the correct answer.      **A   B   C   D   E**      1 mark
  - iii. Where is digested food absorbed from the alimentary canal into the blood?  
Circle the correct answer.      **A   B   C   D   E**      1mark
  - iv. Look at the part labelled **A** on the diagram.  
Write down the names of the **two** parts of the alimentary canal that part **A** connects. \_\_\_\_\_ and \_\_\_\_\_ 2marks