

# ***The Ambassadors College, Ota***

**PRE GRADE 8**

**First Term Holiday Assignment**

## **HOLIDAY ASSIGNMENT**

**2025/2026 Academic Session**

**Name:** \_\_\_\_\_

## MATHEMATICS

---

1. Find the LCM of 16, 32 and 60
2. Find the LCM of  $4a^2b$  and  $6ab^3$
3. Find the LCM of  $8m^3n^2$  and  $12mn^4$
4. Find the HCF of  $12x^3y^2$  and  $18x^2y^4$
5. Find the HCF of 20 and 30
6. Find the HCF of  $27p^2q^3$  and  $36pq^2$
7. Find the HCF of  $45x^3y$  and  $60x^2y^2$
8. Evaluate  $-6 + 8 - (-4) \times (-3)$
9. Simplify  $-15 \div -3 + (-2) \times (-5)$
10. Evaluate  $-4 \times (-3 + 5) - 6 \div -2$
11. Simplify  $-18 \div 3 - (-4) \times (-2 + 5)$
12. Evaluate  $-7 + (-3) \times (-4) - 12 \div -3$
13. Expand  $3(2x + 5)$
14. Expand  $4(x - 3)$
15. Expand  $-3(4m - 6)$
16. Solve for x:  $2x + 5 = 15$
17. Solve for y:  $3y - 7 = 11$
18. Solve for a:  $4a + 6 = 2a + 14$
19. Solve for m:  $5m - 8 = 3m + 12$
20. Solve for p:  $2(p - 4) = 10$

## ENGLISH LANGUAGE

---

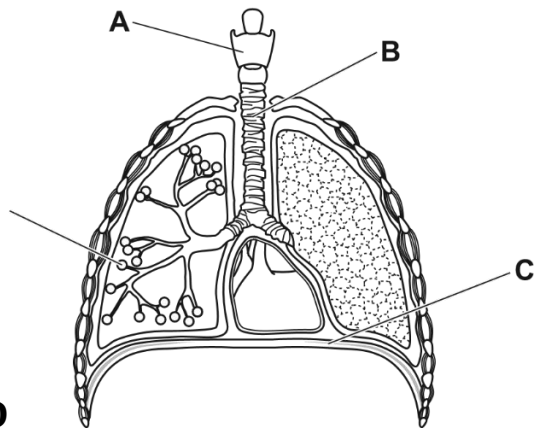
### ESSAY WRITING

Answer ONE question only in this section

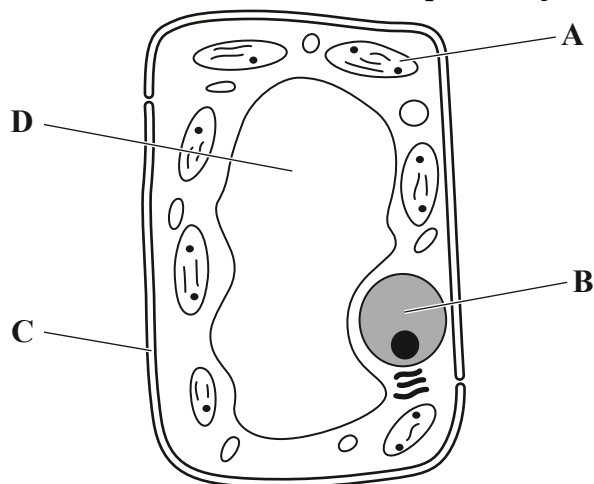
1. Write a letter to your Local Government Authority commenting on three health hazards in your area. Make suggestions as to how the situation can be improved.
2. You have spent about an academic term in your new school. Write a letter to your father telling him about your experiences so far.

## BASIC SCIENCE

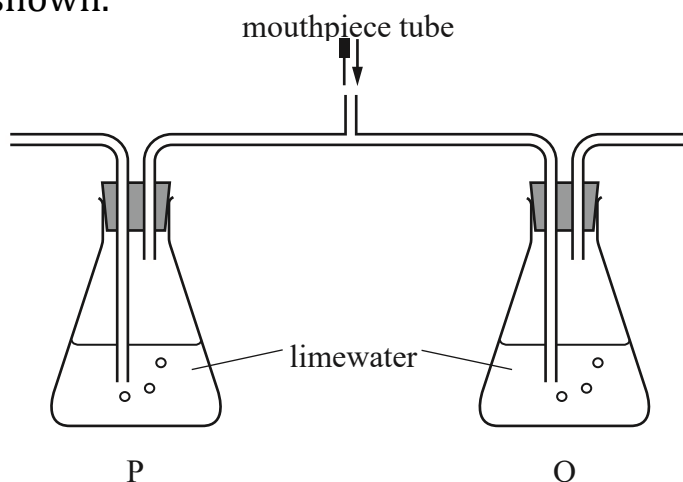
- 1 Which term describes the ability to detect and respond to changes in the environment?  
(a) excretion (b) growth (c) movement (d) sensitivity
- 2 Which label shows the part of the gas exchange system where these cells are found?



- 3 The diagram shows a mesophyll cell.  
In which structure does photosynthesis take place?



- 4 A student breathed gently in and out of the mouthpiece of the apparatus shown.

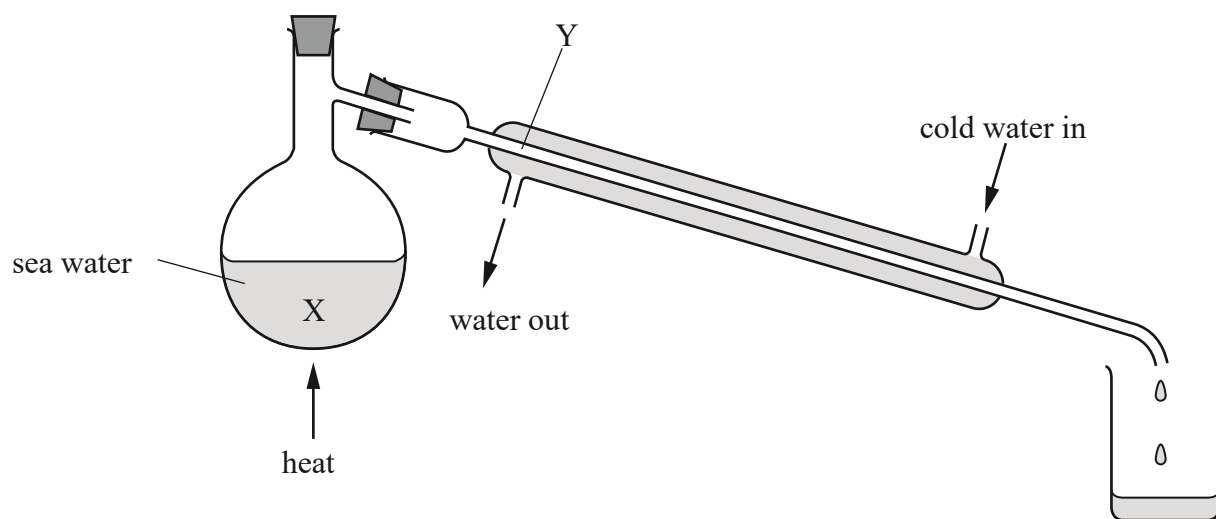


## First Term Holiday Assignment

5 What were the results after 10 breaths?

	P	Q
<b>A</b>	colourless	colourless
<b>B</b>	colourless	milky
<b>C</b>	milky	colourless
<b>D</b>	milky	milky

6 Sea water is heated in the apparatus shown.



Which row describes changes at positions X and Y?

	at X	at Y
<b>A</b>	concentration of solution decreases	solvent condenses
<b>B</b>	concentration of solution decreases	solute condenses
<b>C</b>	concentration of solution increases	solvent condenses
<b>D</b>	concentration of solution increases	solute condenses

## BASIC TECHNOLOGY

- Mention five (5) examples of non metallic materials
  - List and explain the types of plastic that you know.
- Write five (5) drawing instruments and their functions.