

The Ambassadors College, Ota

S.S.S 2

FIRST TERM MID-TERM

HOLIDAY ASSIGNMENT

2024/2025 Academic Session

Name: _____

HOLIDAY ASSIGNMENT

MATHEMATICS

1. A Sector of angle 135° is moved from a thin circular sheet of radius 40cm. It is then folded with the straight edges coinciding to form a right circular cone. Calculate the
 - a. base radius of the cone, correct to two decimal place;
 - b. greatest volume of liquid which the cone can hold, leaving your answer correct to the nearest cm^3 . [Take $\pi = \frac{22}{7}$]

ENGLISH LANGUAGE

Draw a table outlining the Effects of Emissions on Climate Change and their Solutions.

E.g.:

A	B
Emissions cause.....	This can be solved by

CHEMISTRY

1. In the electrolysis of dilute CuSO_4 solution using platinum electrodes, 2.0A current passed for 2.50hrs and deposited 5.85g of copper.
 - a. Calculate the relative atomic mass of copper from the experiments.
 - b. What volume of gas is liberated at S.T.P.

BIOLOGY

1. What is Dentition.
2. Write the dental formula for man, rabbit and dog.
3. Explain three feeding habit in animals.

FINANCIAL ACCOUNTING

1. Simplified Accounting page 280, Question 11x
2. Simplified Accounting page 279, Question 10x

ECONOMICS

1. Explain the following
 - i. Monopolistic Competitive Market
 - ii. Oligopoly
 - iii. Oligopsony
2.
 - i. Describe any four ways by which industries development can promote agriculture in your country.
 - ii. Explain TWO reasons for sitting of industries in the rural areas of Nigeria.

HOLIDAY ASSIGNMENT

AGRICULTURAL SCIENCE

1. Discuss the husbandry of citrus under the following headings
 - i. Method of propagation
 - ii. Spacing
 - iii. Varieties
 - iv. Soil types
 - v. Nursery practices

CIVIC EDUCATION

1. Identify FIVE public/Civic/Service institutions in Nigeria.
2. Explain FIVE challenges to the effectiveness and efficiency of public service in Nigeria.

GOVERNMENT REGULAR

1. Briefly trace the origin of the 1989 constitution.
2. Explain FIVE features of the 1989 constitution.

GOVERNMENT HONOURS

1. Discuss the formation of unity party of Nigeria.
2. Explain FIVE achievements of unity party of Nigeria.

CHRISTIAN RELIGIOUS KNOWLEDGE REGULAR

- 1a. Explain how Eli failed as a parent.
- b. State any THREE lessons parents today should learn from the attitude of Eli.
- 2a. Outline the circumstances that led to the gift of manna and quails in the wilderness.

CHRISTIAN RELIGIOUS KNOWLEDGE HONOURS

- 1a. Discuss the various religious reforms carried out by Josiah.
- b. State any two significance of Josiah's reforms.
2. What was the state of the nation of Israel after the death of Josiah?

COMMERCE

- 1a. What is Contract?
- b. State FOUR essential element of a valid contract.
2. Explain FOUR implied terms under a sale of goods contract.

LITERATURE REGULAR

1. Read Redemption Road
2. In five paragraphs discuss the subject matter of the novel.

HOLIDAY ASSIGNMENT

LITERATURE HONORS

1. Read Path of Lucas
2. In five paragraphs discuss the subject matter of the novel

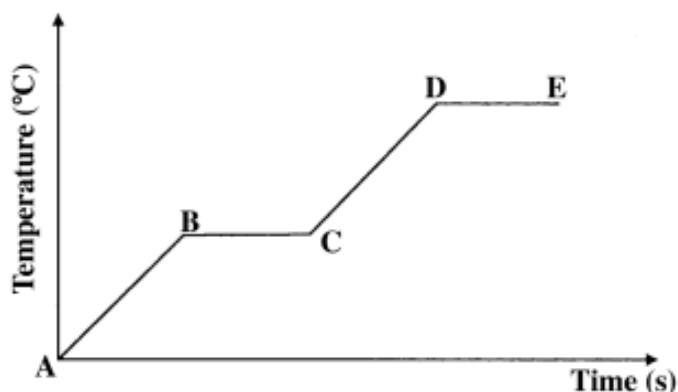
Answer any FOUR (4) questions in this section.

1. Given that: $W = \frac{GMm}{R^2}$

Where: W= weight of an object
M = mass of the earth
m = mass of the object
R = radius of the earth
G = gravitational constant

Using the above formula, determine the dimensions of "G"

2. A particle is projected at an angle of 30° to the horizontal with an initial speed of 25m/s. Calculate the time it takes to get to maximum height.
3. (a) Explain what is meant by 'Specific latent heat of fusion of ice is 33.6 Jg^{-1} '
(b) The figure below shows a graph of variation of temperature with time, for pure substance heated at constant rate.



Assuming that the heat transfer to the surroundings is negligible, state the changes observed on the substance in region:

- (i) **BC**
 - (ii) **DE**
4. (a) A missile is fired from Israel, targeted at Hezbollah in Lebanon. State whether the missile is a projectile or not? Give a reason for your answer.
(b) State the dimensions of force (elastic) constant starting from its definition.