

The Ambassadors College, Ota

S.S.S 1

THIRD TERM MID-TERM

HOLIDAY ASSIGNMENT

2023/2024 Academic Session

Name: _____

HOLIDAY ASSIGNMENT

ENGLISH LANGUAGE

Write down all the 10 words for week 7 from your e note.

Look them up from the dictionary and write down the meaning, part of speech, transcription, synonyms and antonyms ; sentence example for each.

Use the latest edition of Oxford Advanced Learners Dictionary for your answers.

MATHEMATICS

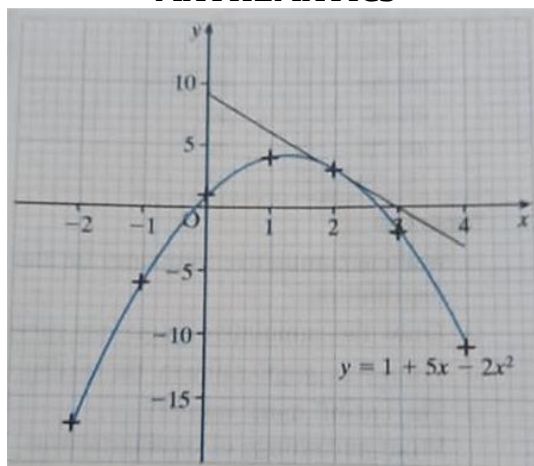


Fig. R.35 is the graph of $y = 1 + 5x - 2x^2$.

A tangent is drawn to the curve at the point at which $x = 2$

Use Fig. R35 to answer the following.

- What is the maximum value of $1 + 5x - 2x^2$
- Write down the equation of the line of symmetry of the curve.
- Find the values of x for which $y = -3$
- Estimate the gradient of the curves at the point at which $x = 2$

GOVERNMENT

- Explain factors that worked against the practised of indirect rule in the Eastern Nigeria.

CIVIC EDUCATION

- What is National Development?
- Discuss FIVE negative factors affecting Economic Development of Nigeria.

AGRICULTURAL SCIENCE

- List three examples of crops that belong to the following agronomic classification
 - Beverage
 - Spice
 - Oil crop
 - Legume
 - Cereal

HOLIDAY ASSIGNMENT

FINANCIAL ACCOUNTING

Below is the Trail balance of Figo as at 31st December 2020

	Debit ₦	Credit ₦
Capital		16,000
Purchases	7,805	
Drawings	2,000	
Rates and taxes	194	
Salaries	806	
Lighting and heating	82	
Electric power	192	
Traveller's commission	207	
Insurance	103	
Advertising	107	
Sales		17,040
Bad debt	31	
Discount		48
General expenses	302	
Postage	111	
Carriage inwards	377	
Stock	3,080	
Wages	3,981	
Land and building	7,920	
Plant and Machinery	2,017	
Furniture and fittings	189	
Debtors	3,040	
Creditors		2,091
Cash in bank	2,635	
	35,179	35,179

Additional Information

Provide 2 ½ for discount on debtors and create a bad debt provision of 10%.

Depreciation of 10% is to be written off on plant and machinery furniture 5%

Stock at close ₦4,380

Wages owing ₦250

Insurance paid in advance amounted ₦10

Included in debtor is ₦300 owing by Joy and included in the creditors is ₦100 owing to Joy.

Plant which stood at ₦500 in the books on 1st January was disposed of for ₦190 in part exchange for a new machine costing ₦420. A net invoice of ₦230 was passed through purchases day book.

Purchases invoices amounting to ₦120 had been omitted from the books.

Private purchases amounting to ₦120 had been included in the purchases day book

You are required to prepare:

The Trading profit and loss account and Balance sheet as at 31st December 2020.

ECONOMICS

HOLIDAY ASSIGNMENT

1. With the aid of diagram, explain the law of diminishing marginal utility. With detailed explanation.
- 2a. What is the indifference curve theory.
- b. Explain the budget line and consumes equilibrium
- c. what is known as consumer surplus.

PHYSICS (HONOURS)

- 1a. Mention two different between barometer and hydrometer.
- b. Mention two applications of hydrometer.
- c. A particle was projected at the base of an inclined plane of 30° to the horizontal at angle of projection 60° with a velocity of 100ms^{-1} .
Calculate;
 - i. time of light
 - ii. horizontal distance covered along the plane.
- d. Give a device use to;
 - i. Measure the velocity of sound.
 - ii. Seismic wave

CHEMISTRY (HONOURS)

1. List the method of preparing soluble and insoluble trioxocarbonate(IV).
2. How can you test for trioxocarbonate(IV)
3. List five uses of trioxocarbonate(IV) in the labouratory.
4. Using diagram show how carbon(IV)oxide is prepared in the labouratory.
5. State the product of the destructive distillation of coal and their uses.

CHEMISTRY (REGULAR)

1. What is destructive distillation of coal.
2. Name the product of the destructive distillation of coal and give their uses.
3. List three chemical properties of carbon.
4. What is destructive distillation of wood.
5. Name the products of the destructive distillation of wood.

COMMERCE

1. Explain the following services provided by the NIPOST
 - i. Poste Restante
 - ii. Parcel Post
 - iii. Recorded delivery
 - iv. Licensing of franking machine
 - v. Business reply service
2. Describe five factors that determine the choice of means of transportation for goods.

CHRISTIAN RELIGIOUS KNOWLEDGE

1. What is a Covenant?
2. Narrate the covenant God made with Abraham.

GOVERNMENT

- 1a. Define Colonialism
- b. The positive imparts of colonialism in Nigeria are many and varied. Discuss.
2. Different between assimilation and association as French Policies of colonial governance.